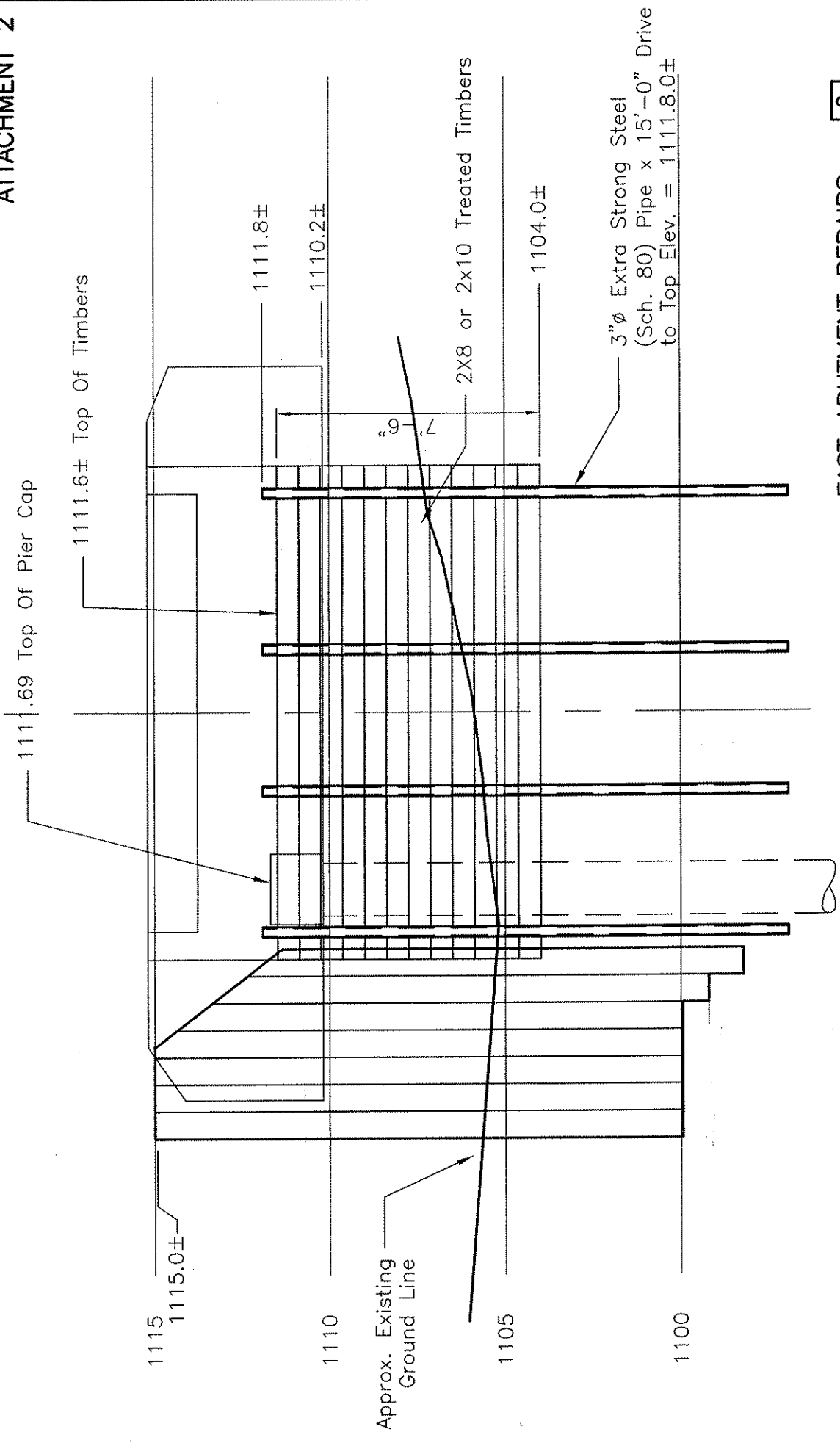


LAMP RYNEARSON & ASSOCIATES

14710 West Dodge Road, Suite 100
Omaha, Nebraska 68154-2027
www.LRA-Inc.com

CUT-OFF WIER AND ABUTMENT REPAIR DETAILS

drawn by RJK	designed by JMH	reviewed by JMH	project - task number 0191052.90-384	date 10-03-2011	book and page	revisions
path\filename L:\Engineering\91052.90\Creek Stabilization_2010\91052A101.dwg						



EAST ABUTMENT REPAIRS 2 4

Scale: 1/4" = 1'-0"

LAMP RYNEARSON & ASSOCIATES

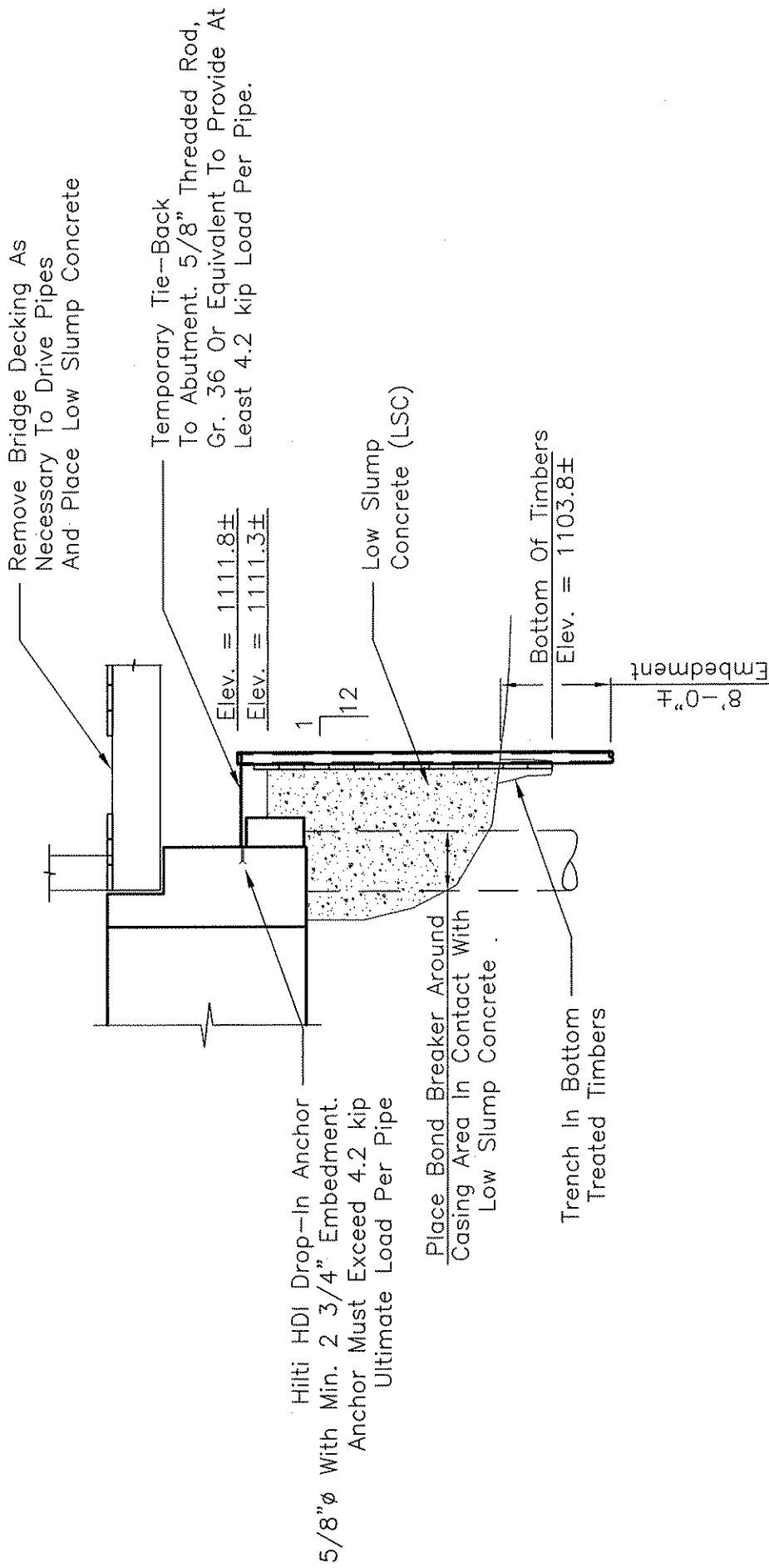
14710 West Dodge Road, Suite 100 402.496.2498 | P
 Omaha, Nebraska 68154-2027 402.496.2730 | F
 www.LRA-inc.com

designed by JMH reviewed by JMH project - task number 0191052.90-384 date 10-03-2011

drawn by RJK path\filename L:\Engineering\91052.90\Creek Stabilization_2010\91052A101.dwg

CUT-OFF WIER AND
 ABUTMENT REPAIR DETAILS

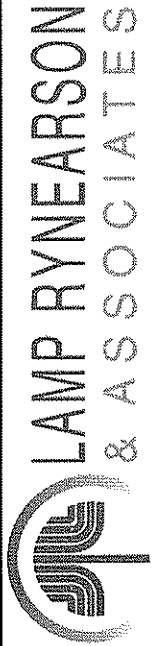
book and page | revisions



SECTION THRU ABUTMENT

3
4

Scale: 1/4" = 1'-0"



LAMP RYNEARSON & ASSOCIATES

14710 West Dodge Road, Suite 100 402.496.2498 | P
 Omaha, Nebraska 68154-2027 402.496.2730 | F
 www.LRA-inc.com

drawn by RJK	designed by JMH	reviewed by JMH	project - task number 0191052.90-384	date 10-03-2011	book and page	revisions
path\filename L:\Engineering\91052.90\Creek Stabilization_2010\91052A101.dwg						

CUT-OFF WIER AND
 ABUTMENT REPAIR DETAILS