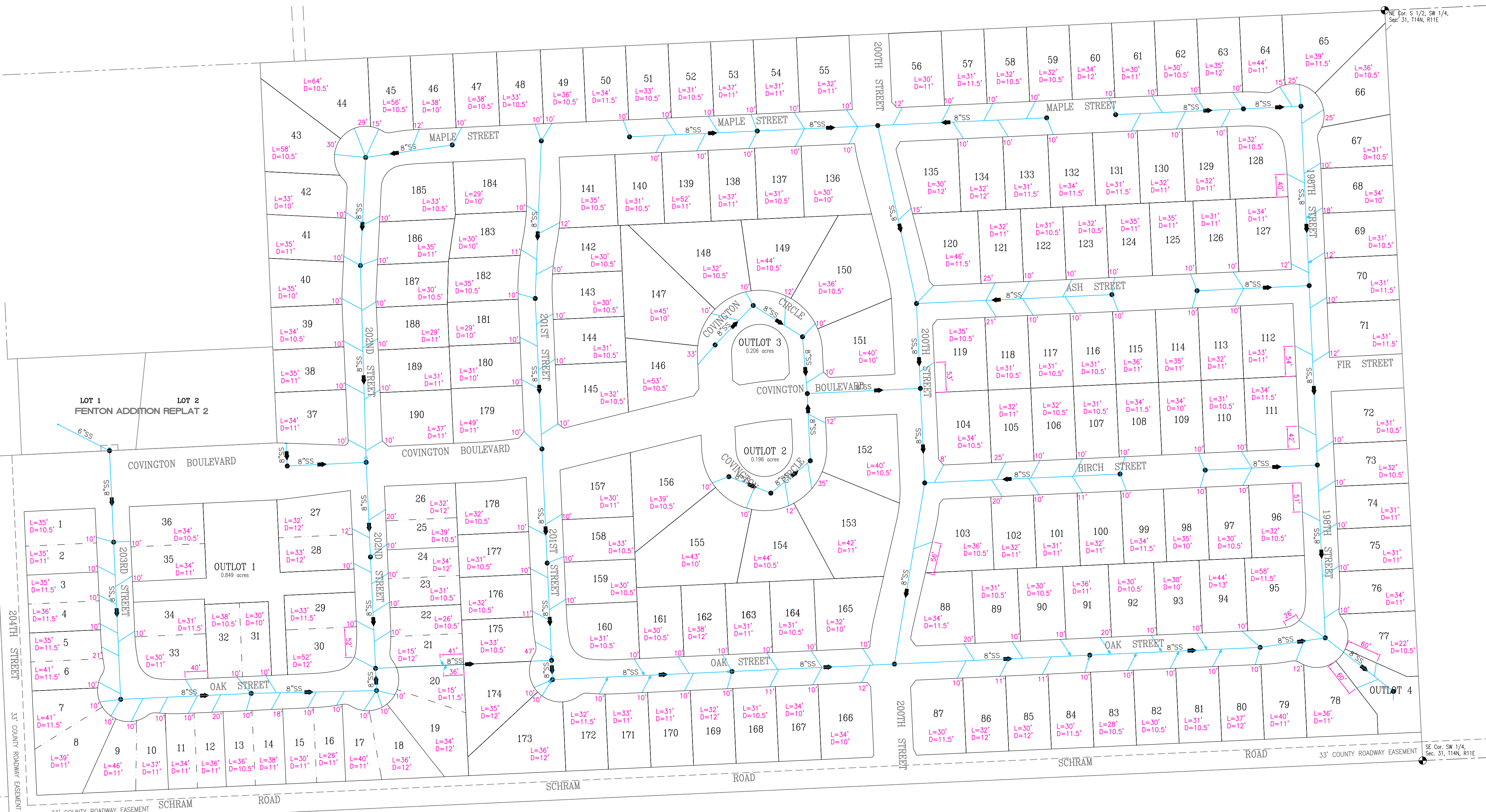


NW Cor. S 1/2, SW 1/4, Sec. 31, T14N, R11E

NE Cor. S 1/2, SW 1/4, Sec. 31, T14N, R11E



These Record Drawings have been prepared based on information submitted, in part, by others. While this information is believed to be reliable, the Engineer is not responsible for its accuracy, nor for errors or omissions which may have been incorporated into this document as a result.

Retain the Location Request Number for YOUR Own Protection!



METROPOLITAN UTILITIES DISTRICT
OMAHA PUBLIC POWER DISTRICT
QWEST
CITY OF OMAHA
CABLEVISION
COX CABLE OF OMAHA
PEOPLES NATURAL GAS
NORTHERN NATURAL GAS
UNITED CABLE TELEVISION

lamp, ryneason & associates, inc.
engineers planners
surveyors

14710 west dodge road, suite 100
omaha, nebraska 68154 2029

ph 402 496 2498
fax 402 496 2730

SW Cor. SW 1/4, Sec. 31, T14N, R11E

SE Cor. SW 1/4, Sec. 31, T14N, R11E